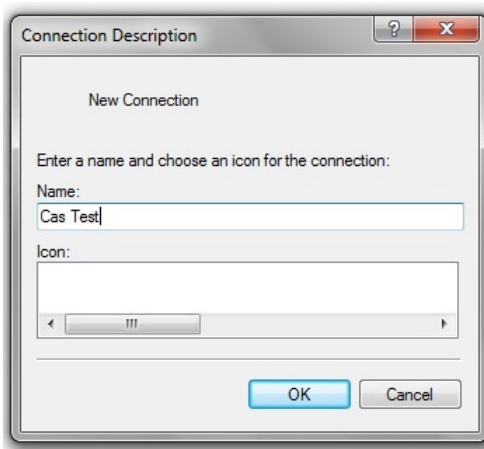


USING HYPERTERMINAL WITH THE PD SERIES



Make sure to use the IBM type CAS cable to hook up from the scale to the PC

When hyper terminal is first opened, a “Connection Description” dialog box opens. Input a “Name” for the description, then click OK.

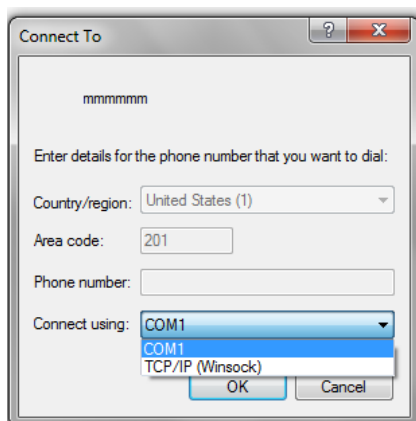
25 pin male to 9 pin female

5 ----- 2

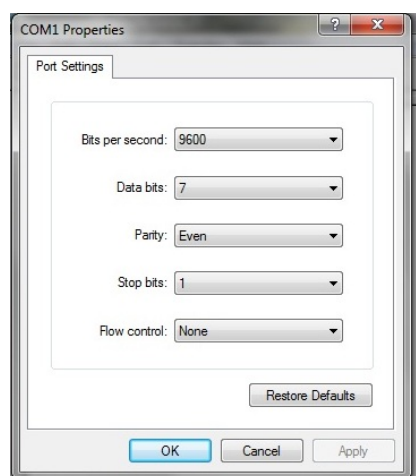
6 ----- 3

23 ----- 5

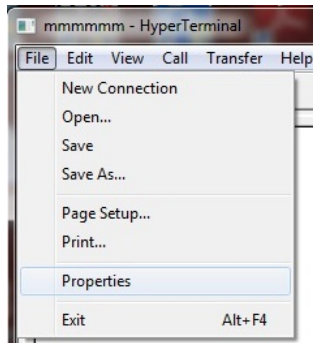
Also short pin 4 to pin 6 and short pin 7 to pin 8 on the 9 pin connector.



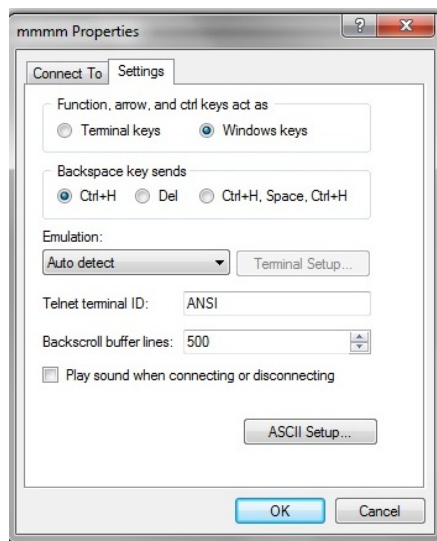
The “Connect To” dialog box appears. From the “Connect using” drop down menu, select the correct port that is being used. Click OK.



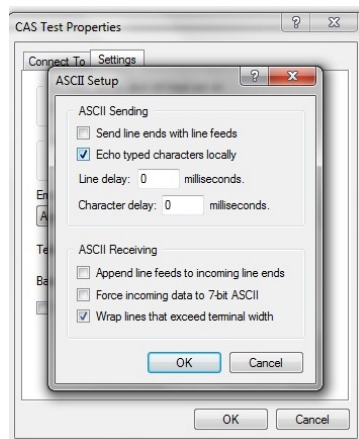
Next, the “Port Settings” dialog box appears. Select from the dropdown menus Bits per second = 9600, Data bits = 7, Parity = Even, Stop bits = 1, and Flow control = None. Click apply and then OK



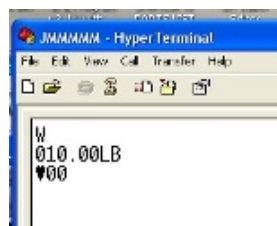
Next click on “File” and from the drop down menu select “Properties”.



When the “Properties” dialog box opens click on “Settings”. Under “Function, arrow, and ctrl keys act as” select “Windows keys”. Next click on “ASCII Setup”.



Under “ASCII Setup” select “Echo typed characters locally” Click OK and when that box closes click OK in the “Properties” box.



Next, key in a capital “W” and press the enter key. The weight on the scale will appear on the display.